



**PERFORMANCE
WORLD**

02.13.25



**NEW PRODUCT SUPPLEMENT
FOR THE 2024 CATALOG**



NEW PRODUCTS

2024 Catalog Changes, Corrections & Addendums

Page 41 & 42 - 650321/650321EFI RPM range should read 2,500-7,000 RPM

Page 42 - 650321EFI height should read 4.95" front/4.95" rear. Now also includes fuel rail kit!

Page 166 - All V-Band replacement clamps come with T-bolt & nut too

Page 197 - DBK6272PB does not come with a proportioning valve as stated. Sold separately.

Page 200 - The 846500 does not fit PW9 axles as stated without modification. (Rotor register needs to be opened to 2.80")

Page 292 - The reference "See page 251" should read "See page 277"

LS VALVE COVER COIL BRACKET BOLTS

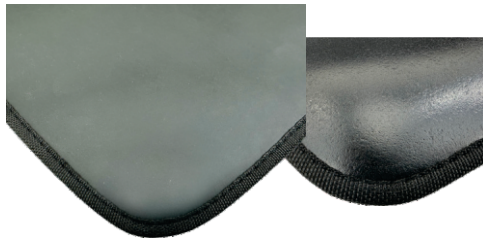
- Button head stainless steel
- Perfect dress-up replacement for OE bolts
- Fits our 366143/BK & other valve covers
- Includes stainless steel washers



IN STOCK!

Coil Mount Bolts	APPLICATION	SET QTY.
Part Number 366130	LS2/3/4/7/9	16

HEAVY DUTY FENDER COVERS



- 35" x 25"
- Heavy duty - 4mm thick
- Fully stitched seam edge
- PVC foam backed to protect paint



IN STOCK!

PW Fender Cover	COLOR
Part Number 790000	Black

LS/LT ROCKER ARM TRUNNION UPGRADE

- A must with higher lift cams and increased spring pressures
- High quality 52100 bearing steel trunnions
- Bronze bushings for ultimate reliability
- Includes assembly washers

IN STOCK!



Trunnion Upgrade	APPLICATION	SET QTY.
Part Number 369000	Gen III/IV LS & Gen V LT Engines	16



HOUSING & AXLE PACKAGES



IN STOCK!

- Bolt-in ready or universal 9" housings
- Heavy duty "Notch Back" centers
- Set up for Ford 9" "Late Torino" style brakes
- 31 spline large bearing axles (5x4-1/2" & 5x4-3/4" bolt pattern)
- Matte black painted (corrosion protection)
- Killer price!



PW9 Components Part Number	FITS VEHICLE	AXLE FLANGE OA WIDTH	NOTES
846700-58	Universal (Raw)	58"	No Mounts
846700-60	Universal (Raw)	60"	No Mounts
846755	1955-1957 Chevy	57"	Leaf Spring
846759	1959-1964 Chevy	60"	Coil Spring
846767	1967-1969 GM F-Body	60-1/4"	Mono-Leaf
846768A	1968-1972 GM A-Body	61-1/2"	Coil Spring
846768X	1968-1972 GM X-Body	60-1/4"	Multi-Leaf
846770	1970-1981 GM F-Body	61-1/4"	Multi-Leaf
846778	1978-1987 GM G-Body	58"	Coil Spring



READY TO INSTALL 9-INCH THIRD MEMBERS



- Bolt in ready 9" third members
- Nodular iron 3.062" case
- Big bearing "Daytona" pinion support
- Traction Lock 31 spline posi
- Billet yoke for 1350 u-joint
- Motive Gear™ gears, bearings
- (2) Bottles Ford posi additive included!



IN STOCK!

PW9 Components Part Number	GEAR RATIO	AXLE SPLINE	POSI STYLE
846835	3.50:1	31-Spline	Traction Lock
846837	3.70:1	31-Spline	Traction Lock
846839	3.89:1	31-Spline	Traction Lock
846841	4.11:1	31-Spline	Traction Lock

Comes in PW#846002 storage case!

GM F-BODY SPRING PERCHES



IN STOCK!

PW9 Components Part Number	FITS VEHICLE	LEAF SPRING	PKG. QTY.
846201	GM F-Body/X-Body	Mono	2
846202	GM F-Body/X-Body	Multi	2

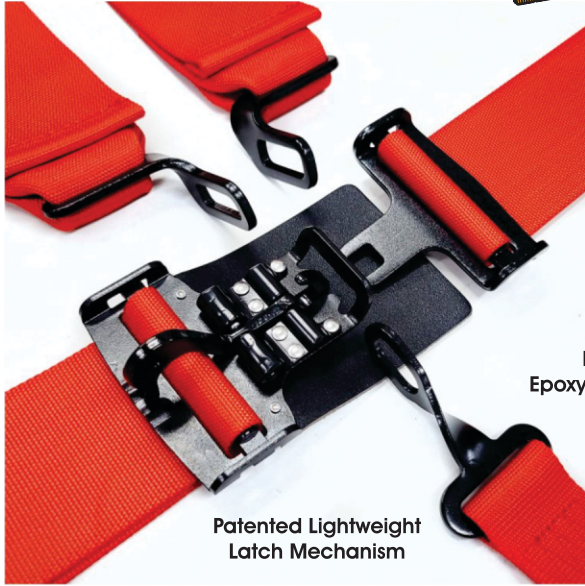


NEW PRODUCTS

5 POINT SFI 16.1 LATCH-LINK HARNESS

- Patented light weight latch - weighs 42% less than others!
- SFI 16.1- Always fresh dates!
- Black epoxy adjusters & hardware
- 3" lap & shoulder, 2" submarine belt
- Individual shoulder harnesses
- Pull down style with release straps
- Bolt-in lap, shoulder & submarine
- Racing use only

IN STOCK!



Patented Lightweight Latch Mechanism



I.D. Tagged

Black Epoxy Hardware



Latch-Link Harness Part Number	STYLE	COLOR
270600	3" 5-Point Latch-Link	Black
270620	3" 5-Point Latch-Link	Red
270660	3" 5-Point Latch-Link	Blue

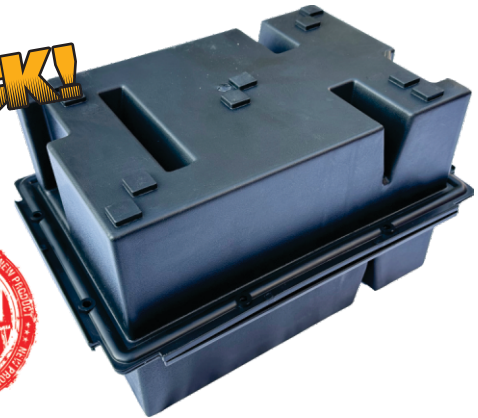
FORD 9 INCH STORAGE CASES



IN STOCK!

- Perfect for storage, shipping or at the track!
- Fits all standard case Ford 9" third members
- Heavy duty ABS

PW9 Components Part Number	FITS DIFF	MATERIAL	QTY.
846002	Ford 9"	ABS	1



LS CYLINDER HEAD DOWELS

- A "must have" when replacing your heads
- OE replacement
- 4/pk

IN STOCK!

LS Dowels Part Number	FITS ENGINES	SIZE	PKG. QTY.
360250	All LS	.640"x.587"	4





RUBBER/ALUMINUM THERMOSTAT GASKET

ETA 2025

- Reusable & durable
- Rubber over aluminum
- Fits all SB & BB Chevrolet and '79-'92 SBM & '92-'03 Magnum



Thermostat Gasket Part Number	FITS ENGINES	PKG. QTY.
120000	SB/BBC & Mopar	1

ALUMINUM LS & LT VALVE COVERS

IN STOCK!

- Polished or Black
- Billet thread-on oil cap
- Hardware & o-ring gaskets included

Valve Covers Part Number	APPLICATION	OVERALL HEIGHT
366136	LS Chevrolet Polished V/C w/Coil Covers	4.25"
366136BK	LS Chevrolet Black V/C w/Coil Covers	4.25"
366144	LT Chevrolet Polished V/C w/Coil Mounts	1.75"
366144BK	LT Chevrolet Black V/C w/Coil Mounts	1.75"



LS HARD LINE STEAM VENT KIT

- Will fit most factory and aftermarket intakes
- Stainless lines with 4AN fittings
- Includes PTFE tape & hardware
- Uses OE style gaskets (not included)

IN STOCK!



LS Steam Vent Kit Part Number	FITS	AN SIZE	STYLE	PKG. QTY.
82003	LS Engines	4AN	4 Port Hard Line	Kit

LS AIR CONDITIONING FITTINGS

- Fits Denso 10S17F & 10S20F compressors
- Adapts to A/C-AN style fittings

IN STOCK!



A/C Fittings Part Number	FITS	A/C AN SIZE	PKG. QTY.
600200	Denso 10S17F & 10S20F	8AC/10AC	Set/2



NEW PRODUCTS

AIRFLOW™ DUAL PLANE ALUMINUM INTAKE MANIFOLDS

- Fits rectangle port LS3
- 1,500-6,500 RPM



IN STOCK!

LS3 CARBURETED



650023
Height = 5.10" front/6.15" rear

Intake Manifolds Part Number	FITS	HEIGHT FR / RR	RPM RANGE	FINISH
650023	LS Chevrolet (LS3)	5.1"/6.15"	1,500-6,500	Satin

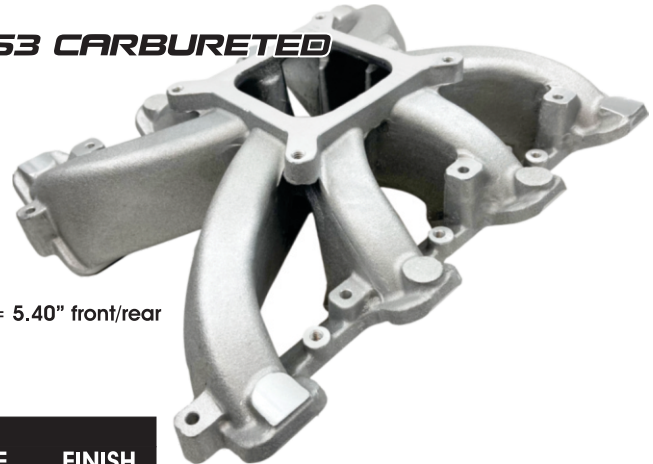
SINGLE PLANE ALUMINUM INTAKE MANIFOLDS

- Fits rectangle port LS3
- 2,500-7,000+ RPM
- Single plane design



IN STOCK!

LS3 CARBURETED



650323
Height = 5.40" front/rear

Intake Manifolds Part Number	FITS	STYLE	RPM RANGE	FINISH
650323	LS Chevrolet (LS3)	S/P Carb	2,500-7,000	Satin

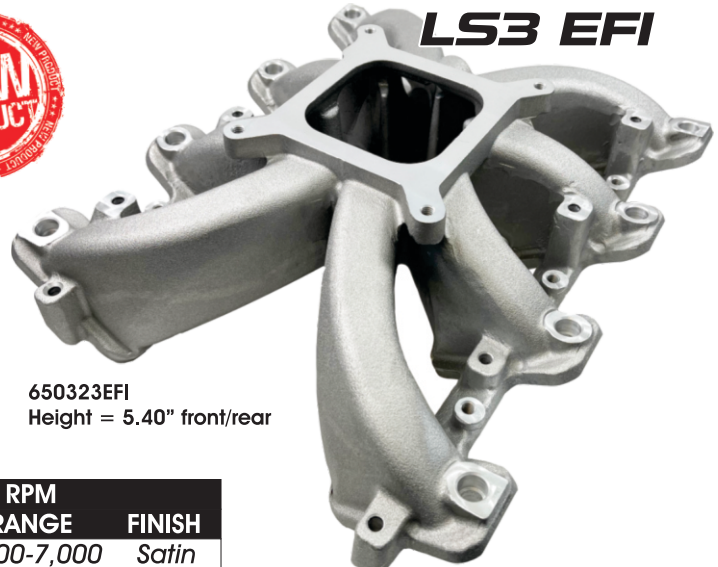
SINGLE PLANE EFI INTAKE MANIFOLDS

- Fits rectangle port LS3
- 2,500-7,000+ RPM
- Use with our 646700 1,000cfm throttle body
- Fuel rail kit included!



IN STOCK!

LS3 EFI



650323EFI
Height = 5.40" front/rear

Intake Manifolds Part Number	FITS	STYLE	RPM RANGE	FINISH
650323EFI	LS Chevrolet (LS3)	S/P EFI	2,500-7,000	Satin



LS VALVE COVER FITTINGS

- Fits LS Chevrolet valve covers & All 3/4" PCV grommets
- Easily plumb oil catch cans & separators
- 8AN or 10AN

IN STOCK!



Shown with 4998

V/C Fittings Part Number	FITS	AN SIZE	PKG. QTY.
82008	LS & 3/4" PCV Grommets	8AN	1
82009	LS & 3/4" PCV Grommets	10AN	1

DUAL PLANE INTAKE MANIFOLDS

- More applications!
- Dual plane street engine design
- Great quality and value priced!

IN STOCK!



Intake Manifolds Part Number	FITS	HEIGHT FR / RR	RPM RANGE	FINISH
650004	Ford 351M/400	TBD	Idle-5,500	Satin
650005	Ford 429/460	3.75"/4.50"	Idle-5,500	Satin
650009	BB Mopar 383/400	4.90"/5.80"	1,500-6,500	Satin
650010	BB Mopar 413/440	4.90"/5.80"	1,500-6,500	Satin

**ETA 2025
IN STOCK!
IN STOCK!
IN STOCK!**

BLACK DUAL PLANE ALUMINUM INTAKE MANIFOLDS

- Flat black finish
- Street or strip!
- 650100BK Airflow™ design allows for cooler intake charge = more power!
- Great quality and value priced!

IN STOCK!



Intake Manifolds Part Number	FITS	HEIGHT FR / RR	RPM RANGE	FINISH
65000BK	SB Chevrolet '55-'95 ¹	4.13"/5.38"	1,500-6,800	Black
650100BK	SB Chevrolet '55-'95 ¹	4.38"/5.25"	1,500-6,800	Black

¹Includes adapters for '87-'95 applications

BRAIDED STEEL THROTTLE CABLES

- Cut to length
- Universal carbureted applications

IN STOCK!



Throttle Cables Part Number	FITS	LENGTH
6054	Universal Carbureted	24"
6054X	Universal Carbureted	36"



NEW PRODUCTS

HIGH PERFORMANCE FUEL PUMPS

- Carbureted - gasoline
- 80GPH fuel flow
- 8psi shut-off
- 1/4" NPTF inlet/outlet
- Does not require a regulator
- Chrome plated

IN STOCK!



Mechanical Fuel Pumps		FUEL FLOW	FINISH
Part Number	APPLICATION		
643303	Ford 351C	80GPH	Chrome
643304	Ford 429-460	80GPH	Chrome
643305	Ford FE 390-428	80GPH	Chrome
643306	SB Mopar 273-360	80GPH	Chrome
643308	Pontiac 350-455	80GPH	Chrome
643309	Oldsmobile 330-455	80GPH	Chrome
643310	BB Mopar 383-440	80GPH	Chrome

RUBBER V/C GASKETS W/STEEL LINERS

- Reusable
- Won't distort or tear!
- Perfect seal every time!
- Sold in pairs

IN STOCK!



Valve Cover Gaskets			
Part Number	APPLICATION	THICKNESS	PKG. QTY.
366400	SB Chevrolet '55-'86	3/16"	2
366401	BB Chevrolet 396-454	3/16"	2
366402	SB Ford 289-351W	3/16"	2
366403	Ford 351C/351M/400	3/16"	2
366404	Ford 429/460	3/16"	2
366406	SB Mopar 273-360	3/16"	2
366408	Pontiac 350-455	3/16"	2
366409	Oldsmobile 330-455	3/16"	2
366410	BB Mopar 383-440	3/16"	2

FORGED BILLET WHEEL ADAPTERS

- Manufactured from rugged, lightweight 6061-T6 billet aluminum forgings
- Widen your vehicle's stance
- Adapt custom wheels
- Grade 12.9 metric studs (most applications)
- Includes acorn nuts
- Sold in pairs

IN STOCK!



6061-T6 P/N	THICKNESS	FITS VEHICLE	FITS WHEEL	ID/OD	STUD SIZE
512139	1.25"	5x5-1/2"	5x5-1/2"	108/176	1/2"-20
612359	1.25"	6x135mm	6x5-1/2"	87/176	1/2"-20
615395	1.50"	6x5-1/2"	6x135mm	108/176	M14x1.5



GM TRUCK 5-LUG REAR DISC BRAKE CONVERSION

IN STOCK!

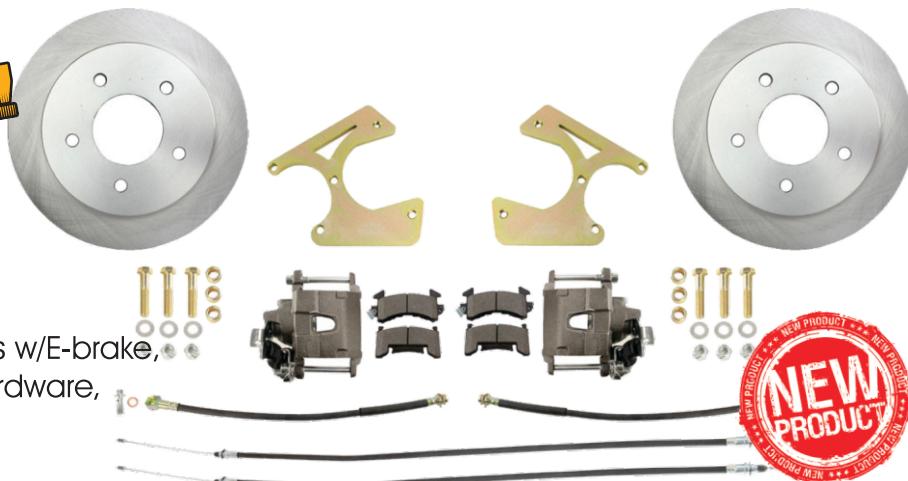
DBK1012TRK-5 (2.42" Offset)

'63-'70 Chevrolet C-10 PU 2WD

Complete kit includes:

12" rotors (5x5"), loaded calipers w/E-brake, caliper brackets, brake lines, hardware, spacers & e-brake cables.

Rotor register = 3.09"



BRAIDED HOSE CUTTING SHEARS

- 24"
- Clean cuts every time!
- Cuts 3AN to 16AN braided steel hose



IN STOCK!

Hose Shears Part Number	CUTS HOSE	LENGTH
784150	3AN to 16AN	24"

E85 FLEX FUEL SENSOR

- Genuine Continental (#SE1004S) OE part
- Use with our 649600 E85 sensor bypass
- Perfect OE replacement
- GM# 13577429

E85 Sensor Part Number	APPLICATION
645260	OE GM or Universal ¹

¹ When used with PW#649600 mount



IN STOCK!

CHROME AIR CONDITIONING COMPRESSOR

- High quality - NEW - NOT REBUILT!
- Chrome plated
- R134 compatible
- Pre-oiled with PAG100 oil

IN STOCK!



A/C Compressor Part Number	STYLE	MODEL	DRIVE
8005	Sanden	SD-7	6 Groove



NEW PRODUCTS

TURBOCHARGER TURBINE DISCHARGE FLANGE

IN STOCK!



- CNC machined stainless steel
- Fits S475/480/488/492 & Borg Warner Marmon Style
- Includes V-band clamp



V-Band Part Number	FITS	V-BAND FLANGE OD	DOWNPIPE SIZE	MATERIAL
427480	S475/480/488/492 & BW Turbos	5.75"	4.00"	S/S

P-W
PRO-SERIES
PRO220



PW PRO-SERIES 8MM SB CHEVROLET BARE ALUMINUM CYLINDER HEADS

- 217cc Intake runners
- Angle plug design
- 2.10"/1.60" x 8mm valve size (not included)
- 23° valve angle
- .750" thick deck
- .250" raised exhaust ports
- Manufactured from A356-T6 heat treated aluminum
- Sold bare ready for assembly
- All tech, specs & parts at www.performance-world.com



P-W
HEADS™

PROVEN.
DIED. STREET. TRACK.

IN STOCK!

Heads Bare Part Number	FITS ENGINE	COMB CC	INTAKE CC	EXHAUST CC	VALVE SIZES	ROCKER MOUNT
65220	SBC 302-400	66cc	217cc	77cc	2.10/1.60	Stud

Note: PRO220 heads have extra large intake ports. Some smaller port intake manifolds will not cover the port. Check your intake manifold before purchasing.

Note: May require .150" offset intake rocker arms. (applications with 3/8" pushrods, tall body lifters, etc.)

HD RACE SHIFTER CABLES

- HD black .375" housing
- 10-32 thread / .250" eyelet
- Fits most popular shifters
- 4', 5' and 8' lengths

IN STOCK!



Shifter Cables Part Number	FITS	LENGTH
840104	Most Aftermarket Shifters	4'
840105	Most Aftermarket Shifters	5'
840108	Most Aftermarket Shifters	8'



SNAP-IN HARNESS MOUNT

- Allows for easy seat belt re & re
- Fits our Cam-Lock and Latch-Link harnesses
- SFI approved
- Black epoxy
- Racing use only

IN STOCK!



Part Number	FITS SIZE/STYLE	PKG. QTY.
270020	2"/3" Cam-Lock & Latch-Link	1

FORD 9-INCH DIFFERENTIAL COMPONENTS



- Cast with flange/slinger
- 28-spline 9" Ford pinion
- For 1310 Series U-joint



IN STOCK!



Part Number	DESCRIPTION	NOTES	SPECS	SIZES
846302	Cast Steel Yoke	Collar to Surface 2.41"	4"x28spl	1310 U-Joint

TURBOCHARGER OIL DRAIN FLANGE GASKETS

- Replacement gaskets
- Sold each



IN STOCK!

Part Number	FITS	BOLT SPACING
83230G	83230	38mm-41.4mm
83240G	83240	50mm-51mm



CAST ALUMINUM LS INTAKE MANIFOLDS

- Low profile
- Will support 750HP+
- Natural cast finish
- Withstands high boost levels
- Use with 92mm or 102mm throttle body
- Accepts LS3 (1.48") fuel injectors
- Bolt together (with o-rings) for easy porting if desired
- Nitrous port bosses on runners (1/8"npt)
- Includes 8AN fuel rails, fittings, line, intake bolts & intake seals



IN STOCK!



Part Number	FITS	HEIGHT FR / RR	T/B SIZE	FINISH
646321	LS1/LS2/LS6	7"	92mm/102mm	Silver
646323	LS3	7"	92mm/102mm	Silver





NEW PRODUCTS

GROMMET SEALS

- Fire resistant rubber seal
- Anodized aluminum bezel
- Tightly grips hose or wiring
- Blanks can be punched easily with our 786100 kit
- Less expensive than bulkheads
- Withstands temps from -40°F to 300°F
- Made in the USA

IN STOCK!

Grommet Seals Part Number	FLANGE OD	HOLE ID	RUBBER DIAMETER	PKG. QTY.
321715	1.50"	Blank	1.00"	1
321720	2.00"	Blank	1.55"	1
321730	3.00"	Blank	2.25"	1
321736	3.00"	.375" (6AN)	2.25"	1
321738	3.00"	.500" (8AN)	2.25"	1
321740	3.00"	.625" (10AN)	2.25"	1
321742	3.00"	.750" (12AN)	2.25"	1
321750	3.00"	Blank (Split)	2.25"	1



GROMMET SEAL PUNCH KIT

- Punch out rubber grommets easily
- Use as a gasket hole punch too!
- Use with 321715, 321720 & 321730 grommets
- 3/16", 1/4", 5/16", 3/8", 1/2"
5/8", 25/32", 1" and 1-1/4" punch dies
(5, 6, 8, 9, 12.5, 16, 20, 25, 32mm)



IN STOCK!

Grommet Punch Kit Part Number	PUNCH SIZES	PKG. QTY.
786100	3/16" to 1-1/4"	Kit



SS SERIES STAINLESS STEEL FULL ROLLER TIP ROLLER ROCKER ARMS

- Full needle bearing roller tips!
- Fully peened finish
- Manufactured from 17-4PH stainless steel
- Lightweight design
- Maximum spring pressure up to 750lbs.
- 5 year structural warranty

IN STOCK!

Stainless Steel Part Number	FITS ENGINE	ROCKER RATIO	STUD SIZE	PKG. QTY.
371200	SBC 265-400	1.50	3/8"	16
371201	SBC 265-400	1.50	7/16"	16
371202	SBC 265-400	1.60	3/8"	16
371203	SBC 265-400	1.60	7/16"	16
371214	BBC 396-454	1.70	7/16"	16
371217	SB Ford (Stud)	1.60	3/8"	16
371218	SB Ford (Stud)	1.60	7/16"	16
371223	Ford 351C-460	1.73	7/16"	16

IN STOCK!

IN STOCK!

IN STOCK!

IN STOCK!

IN STOCK!

IN STOCK!





XP SERIES ALUMINUM FULL ROLLER TIP ROLLER ROCKER ARMS

- Full needle bearing roller tips!
- Manufactured from high strength heat-treated 2024 aluminum
- Silver peened anodized finish
- Lightweight design
- Maximum spring pressure up to 750lbs.
- 1 year warranty



Aluminum Part Number	FITS ENGINE	ROCKER RATIO	STUD SIZE	PKG. QTY.
370200	SBC 265-400	1.50	3/8"	16
370201	SBC 265-400	1.50	7/16"	16
370202	SBC 265-400	1.60	3/8"	16
370203	SBC 265-400	1.60	7/16"	16
370214	BBC 396-454	1.70	7/16"	16
370217	SB Ford (Stud)	1.60	3/8"	16
370218	SB Ford (Stud)	1.60	7/16"	16
370223	Ford 351C-460	1.73	7/16"	16

TOURINGSEAT 2



IN STOCK!

- * OE STYLING *
- * GREAT REPLACEMENT *
- * FULLY RECLINABLE *
- * INCLUDES SLIDERS *
- * ADJUSTABLE HEADRESTS *
- * 4 COMBINATIONS *



TouringSeat2™ Part Number	MATERIAL	STITCHING	SOLD AS
282000	Black Vegan Leather	Black	Pr.
282010	Black Vegan Leather/Suede Inner	White	Pr.
282020	Black Vegan Leather/Suede Inner	Red	Pr.
282200	Black Vegan Leather/Suede Inner	Black	Pr.

Seat slider to vehicle (bracket) pattern = 13-1/2" side to side & 12-3/4" front to rear

TUBULAR CONTROL ARMS

- Sold in complete sets (uppers & lowers)
- Beefy 1.25" diameter (upper) & 1.625" diameter (lower) tubing
- No modifications required for installation
- Billet cross shafts
- Greaseable Delrin bushings
- For disc brake applications only
- Ball joints included
- Gloss black powder coated



847700 Applications
Chevrolet:
1970-1981 Camaro
Pontiac:
1970-1981 Firebird

Tubular Control Arms Part Number	APPLICATION	FINISH	PAIR OR SET/4
847700	'70-'81 GM F-Body	Black PC	Full Set/4





NEW PRODUCTS

AFM/DOD DELETE VALLEY COVERS

- 2007-2013 Gen IV LS2,LS3,LS7 & L92 (4.8,5.3,6.0,6.2L)
- Polished or black anodized
- Includes seals and bolts
- Note: Will not fit FAST LSXR intake manifolds



IN STOCK!

Valley Covers Part Number	FITS ENGINE	FINISH
646604	Gen IV Chevrolet LS2/LS3/LS7	Polished
646614	Gen IV Chevrolet LS2/LS3/LS7	Black

PW 5000-SERIES™ BRAIDED NYLON/STAINLESS STEEL HOSE

- New size!
- Braided steel inner liner for additional strength
- Lightweight & flexible. -40°C to 150°C
- Higher PSI rating than other brands
- Fuel, oil & water applications
- Chlorinated Polyethylene Liner (CPE)

IN STOCK!



5000-Series™ Part Number	MAX PSI	AN SIZE	HOSE I.D.	HOSE O.D.	PKG. LENGTH
500020	350	20AN	1.12"	1.41"	Bulk/ft.

FULL FLOW SWIVEL HOSE ENDS

- New sizes!
- For use with our 5000-Series Braided Nylon/Stainless Hose



IN STOCK!

Swivel Hose End Part Number	ANGLE°	AN/HOSE SIZE
901020	STR	20AN
904520	45°	20AN
909020	90°	20AN

FEMALE TO MALE AN REDUCERS

- New size!

IN STOCK!



AN Reducer Part Number	"A" FEMALE	"B" MALE
8941210	12AN	10AN

FEMALE AN TO MALE AN EXPANDERS

- New size!

IN STOCK!



AN Expander Part Number	"A" FEMALE	"B" MALE
9511012	10AN	12AN



4130 CHROMOLY ROD ENDS

- New size!
- Same features as all our 4130 Chromoly Rod Ends

IN STOCK!



XM Series	SHANK THREAD	THREAD LENGTH	HOLE I.D.	BALL WIDTH	STATIC LOAD LBS.
XML14	7/8"-14LH	2.00"	.875"	.875"	45,051
XMR14	7/8"-14RH	2.00"	.875"	.875"	45,051

DRY QUICK DISCONNECTS

- New size!
- Disconnect without loss of fluids or air entry
- Use for fuel, oil or coolant
- No special tools required



IN STOCK!

Quick Disconnect Part Number	IN/OUT	MAX PRESSURE	COLOR
550010	10AN Male	1,250psi	Black

INTERCOOLERS

- For twin turbo applications
- Bar and plate design
- New configuration
- Mounting plates (side)
- Universal

IN STOCK!



Intercoolers Part Number	CORE WIDTH	CORE HEIGHT	CORE THICKNESS	INLET OUTLET	I/O CONFIG	HP SUPPORT
60604	24"	10"	3.5"	2x2.50", 1x3"	Center	1,000HP+

INLINE 8AN ROLLOVER VALVE

- 8AN
- Black anodized

IN STOCK!



Rollover Valve Part Number	DESCRIPTION	AN SIZE
834018	Inline rollover valve	8AN

MALE TO FEMALE AN PRESSURE ADAPTER WITH 1/8NPT PORT



MALE AN STEEL WELD BUNG

IN STOCK!



Pressure Adapters Part Number	THREAD IN HEX	AN SIZE
80310	1/8" NPTF	10AN

Male AN Weld Bungs Part Number	MATERIAL	AN SIZE
67112	No Hex Steel	12AN



NEW PRODUCTS

UHP SERIES HD PERFORMANCE ENGINE BLOCKS

- Get a BRAND NEW **BETTER** HP block for **the same or less** than machining your old junkyard block!
- Premium high strength 32B cast iron
- Billet 4-bolt main caps (splayed centers)
- Priority oiling to main bearings
- External front and rear oil feeds
- Thick standard height decks
- Uses all standard parts
- Rated to 1500HP



- 364350 - SBC 350 Main 4.00" Bore**
- 364373 - SBC 350 Main 4.125" Bore**
- 364400 - SBC 400 Main 4.125" Bore**

Specs:

Bore: 4.00" or 4.125" (Max Bore: 4.185" - .275" wall thickness)

Max Stroke: 4.00"

Deck Height/Thickness: 9.025"/0.675"

Main Bearings: 350 (2.649" bore) or 400 (2.849" bore)

Main Caps: Billet Steel (Center 3 splayed)

Cam Location: Standard SBC

Cam Journal ID: 2.00" (Bearings installed)

Cam Plug: 2.375" (Not included)

Lifter Bore: Standard SBC (.842")

Frost Plugs: 1.625" (10)

Oil System: Main priority oiling

Oil Pan: Standard early SBC

Rear Main Seal: Standard early 2pc

Fuel Pump: Mechanical

Oil Filter/Starter/Timing Chain: Standard SBC

Weight: 205 lbs.

IN STOCK!

- 364351 - SB Ford 351W 4.00" Bore**
- 364375 - SB Ford 351W 4.125" Bore**

Specs:

Bore: 4.00" or 4.125" (Max Bore: 4.185" - .250" wall thickness)

Max Stroke: 4.125"

Deck Height/Thickness: 9.50"/0.675"

Head Stud Holes: 1/2" (blind)

Main Bearings: Standard 351C (2.749" bore)

Main Caps: Billet Steel (Center 3 splayed)

Cam Location: Standard SBF

Cam Journal ID: 2.20" (all 5)

Cam Plug: 2.375"

Lifter Bore: Standard SBF (.875")

Frost Plugs: 1.50" Press-in

Oil System: Main priority oiling

Oil Pan: Standard 351W (modified)

Rear Main Seal: Standard

Oil Filter/Starter/Timing Chain: Standard 351W

Weight: 172 lbs.

IN STOCK!





TV CABLE BRACKET FOR LS FABRICATED INTAKE MANIFOLDS USING A TH700R4

- A PW Exclusive!
- Fits most PW (and some others) fabricated LS intake manifolds
- Allows easy TH700R4 transmission swaps
- For use with PW#2344 throttle and PW#6051 TV cables
- Maintains correct geometry for TV cable
- Includes instructions

IN STOCK!



TV Cable Bracket Part Number	FITS	FITS TRANS	COLOR
646105	Most PW Fabricated Intakes ¹	TH700R4	Silver
646115	Most PW Fabricated Intakes ¹	TH700R4	Black

¹Fits all except LS3 low profile 646303 & 646313

PRODRAG²

ALUMINUM RACING SEATS

- Drag or Pro Street
- Seat AND black tweed cover
- 2.35mm thick aluminum
- 35.5" Tall
- 24.5" overall depth
- 15", 16", 17", 18.5" & 20" hip widths
- Sold each

IN STOCK!

Shown without cover



DragSeat ² ™ Part Number	MATERIAL	HIP WIDTH	SOLD AS
283015	Black Tweed Cloth	15"	Each
283016	Black Tweed Cloth	16"	Each
283017	Black Tweed Cloth	17"	Each
283019	Black Tweed Cloth	18.5"	Each
283020	Black Tweed Cloth	20"	Each

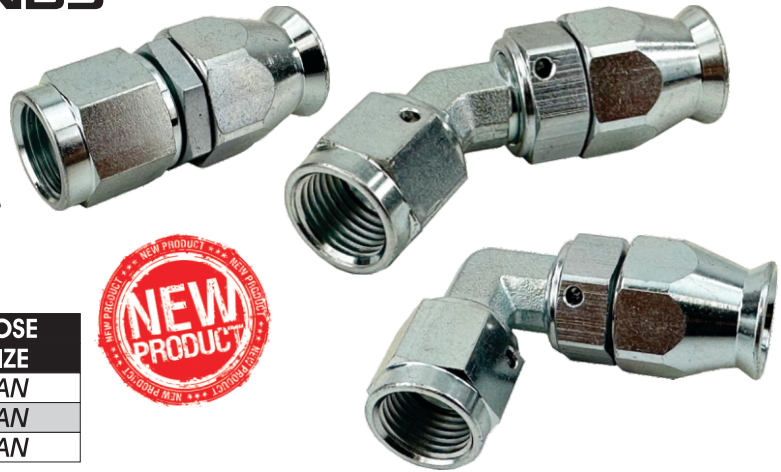


NEW PRODUCTS

PTFE STEEL HOSE ENDS

- Forged steel
- Now available in 6AN too!
- Bright zinc coated

IN STOCK!



PTFE Hose End Part Number	ANGLE°	AN SIZE	HOSE SIZE
201016	STR	6AN	6AN
204516	45°	6AN	6AN
209016	90°	6AN	6AN

340LPH HIGH VOLUME E85 IN-TANK FUEL PUMPS

- 340LPH @ 43PSI
- Includes: strainer, wiring, hose, clamps & isolator
- Three styles to fit most applications
- For use on return style EFI fuel systems
- Gasoline & E85 compatible

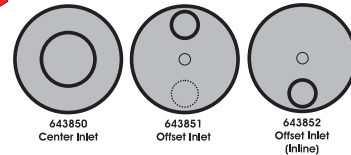
IN STOCK!



E85 FLEXFUEL



E85 Fuel Pumps Part Number	INLET	OUTLET
643850	Large Center	Offset
643851	Offset	Offset (opposite)
643852	Offset	Offset (same side)



TURBINE HOUSINGS

- 3900102115V** - 1.15A/R housing for GTX55 PW Turbochargers
- 3.50" V-Band Inlet - 4" V-Band outlet
- 3900102124T** - 1.24 A/R housing for GTX55 PW Turbochargers
- T6 Inlet - 5.155" V-Band outlet



IN STOCK!



Turbine Housing Part Number	APPLICATION	IN/OUT FLANGE
3900102115V	PW GTX55 Turbos 1.15 A/R	V-Band
3900102124T	PW GTX55 Turbos 1.24 A/R	T6/V-Band

PWTURBO REFRESH KITS

- Includes components for rebuilding your PWTurbo

IN STOCK!



Turbo Refresh Kits Part Number	APPLICATION
390088KIT	PW S480-S492 Journal Bearing Turbos
397875KIT	PW 7875 Journal Bearing Turbos
3900102KIT	PW GTX55 Journal Bearing Turbos

3900102KIT



397875KIT



BRAIDED STEEL LS THROTTLE CABLE

- Cut to length
- LS, LT1, TPI, Ramjet & Vortec applications
- Includes allen key

IN STOCK!



Throttle Cable Part Number	FITS	LENGTH
2344	GM LS, LT1, LT4, Ramjet & Vortec EFI	36"

BRAIDED STEEL TH700R4 TV CABLE

- Cut to length
- Fits GM TH700R4
- Includes allen key

IN STOCK!



TV Cable Part Number	FITS	LENGTH
6051	GM TH700R4 Transmissions	48"

FORGED BILLET WHEEL ADAPTERS

- Use late model Camaro wheels on your early GM!
- Manufactured from rugged, lightweight 6061-T6 billet aluminum forgings
- Grade 12.9 metric studs (most applications)
- Includes acorn nuts
- Sold in pairs



IN STOCK!



6061-T6 P/N	THICKNESS	FITS VEHICLE	FITS WHEEL	ID/OD	STUD SIZE
512120	1.25"	5x4-3/4"	5x120mm	74/156	M14x1.5

STEEL RE-INFORCED ONE-PIECE SILICONE OILPAN GASKET

- Won't distort or tear!
- Perfect seal every time!
- Steel re-forced
- Provision for left or right hand dipstick
- Fits pre-1985 SB Chevrolet with 2pce rear main seal
- For thick seal timing covers ('75-up & most aftermarket)

ETA FEB 2025



Oilpan Gasket Part Number	APPLICATION	PKG. QTY.
366500	SB Chevrolet '55-'85	1



NEW PRODUCTS

OE FIT SHORTY STAINLESS STEEL HEADERS

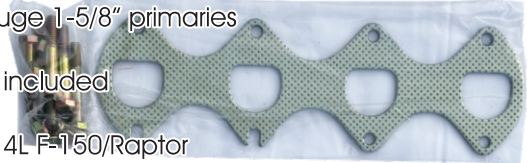
- Raw T304 stainless steel
- Thick 3/8" flanges
- Heavy Duty 14ga. tubing (424048,054,057)
- Includes gaskets and hardware

Headers Part Number	APPLICATION	TUBING GA.	FINISH
424048	'02-'18 GM Truck 4.8/5.3L	14ga.	Raw
424054	'04-'10 Ford F-150 5.4L	14ga.	Raw
424057	'09-'19 Dodge Ram 5.7L	14ga.	Raw
420550	'86-'93 Mustang 5.0L	16ga.	Raw

424048 Chevrolet/GMC LS Truck Shorty OE Fit
 Super-Thick 3/8" flanges
 Heavy duty 14 gauge 1-5/8" primaries
 OE hookup
 Gaskets and bolts included
 Fits:
 2002-2013 4.8/5.3L Silverado/Sierra
 2002-2014 4.8/5.3L Suburban/Tahoe/Yukon
 2007-2014 6.0/6.2L Silverado/Sierra
 2007-2013 6.0/6.2L Tahoe/Yukon
 2014-2018 6.0L 2500/3500HD Silverado/Sierra
 2015-2016 6.0/6.2L Tahoe/Yukon
 2017-2019 6.2L SFI 2500 Silverado/Sierra



424054 Ford F-150/Raptor 5.4L Shorty OE Fit
 Super-Thick 3/8" flanges
 Heavy duty 14 gauge 1-5/8" primaries
 OE hookup
 Gaskets and bolts included
 Fits:
 2004-2010 Ford 5.4L F-150/Raptor



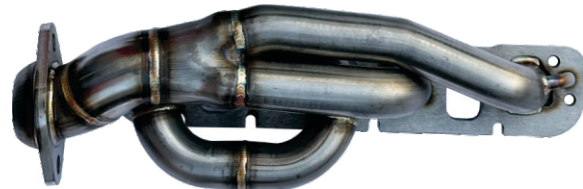
IN STOCK!



424057 Dodge Ram 1500 5.7L Hemi (Classic DS) Shorty OE Fit
 Super-Thick 3/8" flanges
 Heavy duty 14 gauge 1-5/8" primaries
 OE hookup
 Gaskets and bolts included
 Fits:
 2009-2024 Dodge Ram 1500 (Classic DS ONLY!) 5.7L Hemi
 (No-fit 2019-up DT!)



420550 Ford Mustang 5.0L Shorty OE Fit
 Super-Thick 3/8" flanges
 Heavy duty 16 gauge 1-5/8" primaries
 OE hookup
 Gaskets and bolts included
 Fits:
 1986-1993 Mustang 5.0L





LS SWAP 304 STAINLESS STEEL HEADERS

- Raw T304 stainless steel
- Thick 3/8" flanges
- Heavy Duty 16ga. 1-7/8" primaries
- 3" collector with O2 bungs
- Includes gaskets (no hardware)

Headers Part Number	APPLICATION	TUBING DIA.	FINISH
420340	Chevrolet A/F/X/G LS Swap	1-7/8"	Raw
420540	'79-'93 Mustang LS Swap	1-7/8"	Raw

420340 Chevrolet A/F/X/G-Body LS Swap
 Super-Thick 3/8" flanges
 Heavy duty 16 gauge 1-7/8" primaries
 3" collector with O2 bungs
 Gaskets included

Fits:

- 1970 - 1981 Chevrolet Camaro/Firebird
- 1964 - 1977 Chevrolet Chevelle/El Camino
- 1964 - 1972 Pontiac GTO/Buick Skylark
- 1964 - 1977 Oldsmobile Cutlass
- 1975 - 1979 Chevrolet Nova
- 1970 - 1977 Chevrolet Monte Carlo
- 1978 - 1981 G-Body

Install Notes:

1" offset back motor mounts recommended
 4L80E and TH350/400 bellhousing "ears" may need trimming

420540 '79-'93 Mustang Fox Body LS Swap
 Super-Thick 3/8" flanges
 Heavy duty 16 gauge 1-7/8" primaries
 3" collector with O2 bungs
 Gaskets included

Fits:

- 1979-1993 Mustang/Fox Body

Install Notes:

Headers fit using AJE Motor Mounts, Flaming River Steering Shafts, & AJE K-Members.
 Other mounts unconfirmed.

420240 Chevrolet F/X-Body LS Swap
 Super-Thick 3/8" flanges
 Heavy duty 16 gauge 1-7/8" primaries
 3" collector with O2 bungs
 Gaskets included

Fits:

- 1967 - 1969 Chevrolet Camaro/Firebird
- 1968 - 1974 Chevrolet Nova

Install Notes:

4L80E and TH350/400 bellhousing "ears" may need trimming

ETA FEB 2025

IN STOCK!



IN STOCK!



Headers Part Number	APPLICATION	TUBING DIA.	FINISH
420240	Chevrolet F/X LS Swap	1-7/8"	Raw



NEW PRODUCTS

1979-1993 MUSTANG 5.0L OFF-ROAD H-PIPE

- Mild Steel

ETA FEB 2025



H-Pipe Part Number	FITS	MATERIAL THICKNESS	PIPE SIZE
418693	'79-'93 Mustang	16ga.	2-1/2"

FUEL CELL IN-TANK DUAL PUMP HANGER

- CNC machined billet aluminum
- Available with or without fuel pumps
- Fits 12-bolt PW, RCI and other 5.28" bolt circle cells
- Single or dual fuel pump capability (39mm diameter)
- 10mm PTFE tubing for 400lph+ pumps (optional 8mm)
- 8AN ORB outlets and return (fittings sold separately)
- Built in fuel fill with o-ring cap
- Height adjustable (max depth 11")
- E85 compatible

IN STOCK!



- 649700 Includes:
- (1) Hanger assembly
- (12) M6x1.0-20 stainless steel cap screws
- (12) PTFE sealing washers
- (2) Pinch clamps
- (1) 12-bolt gasket



649734 (fittings not included)

E85 FLEXFUEL

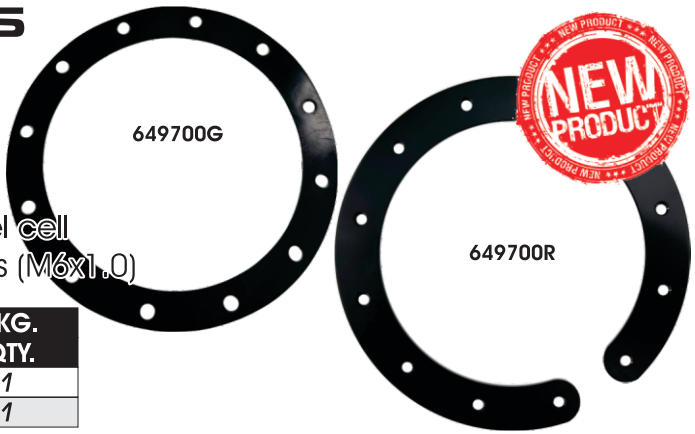
- Optional parts:
- 649505 - 8mm x 110mm PTFE tubing for 255LPH-340LPH pumps
 - 7350805 - 8AN ORB to 8mm tube fitting for use with 255LPH-340LPH pumps
 - 649700G - Replacement 12-bolt gasket
 - 649700R - Retro-fit ring for mounting in fuel cells without integrated threads

In-Tank Hanger Part Number	STYLE	E85 TURBO HP RATING	E85 N/A HP RATING	PUMPS INCLUDED
649700	12-Bolt	N/A	N/A	No
649734	12-Bolt	950HP	1,250HP	2x340LPH
649745	12-Bolt	1,300HP	1,675HP	2x450LPH
649747	12-Bolt	1,360HP	1,750HP	2x470LPH
649749	12-Bolt	1,425HP	1,825HP	2x490LPH

IN-TANK HANGER PARTS

IN STOCK!

- Fits 649700 in-tank fuel pump hanger
- 649700G fits any 5.28" bolt pattern 12-bolt fuel cell
- 649700R is for fuel cells without threaded holes (M6x1.0)



649700 Parts Part Number	DESCRIPTION	PKG. QTY.
649700G	12-bolt Replacement Gasket	1
649700R	Retro-fit Threaded Retainer	1



REDUCER FLANGE KITS

- Mild Steel
- Includes 2 flanges, 2 gaskets & hardware

IN STOCK!



Flange Kits	STYLE	FLANGE THICKNESS	SIZE
Part Number			
427525	3-Bolt	5/16"	2-1/2"
427530	3-Bolt	5/16"	3"

WELDED HEADER REDUCER KITS

- Mild Steel
- Includes 2 reducers, 2 gaskets & hardware

IN STOCK!



Reducers	STYLE	INLET SIZE	OUTLET SIZE	FLANGE THICKNESS
Part Number				
427625	3-Bolt	2-1/2"	2-1/4"	5/16"
427630	3-Bolt	3"	2-1/4"	5/16"
427635	3-Bolt	3-1/2"	2-1/2"	5/16"

HOUSING & AXLE PACKAGES

PW9
PERFORMANCE 9-INCH COMPONENTS



ETA 2025

- Bolt-in ready or universal 9" housings
- Heavy duty "Notch Back" centers
- Set up for Ford 9" "Late Torino" style brakes
- 31 spline large bearing axles (5x4-1/2" & 5x4-3/4" bolt pattern)
- Matte black painted (corrosion protection)
- Killer price!



PW9 Components	FITS VEHICLE	AXLE FLANGE OA WIDTH	NOTES
Part Number			
846779	1979-1993 Mustang (5-Lug)	TBA	Coil Spring
846782	1982-1992 GM F-Body	61-7/8"	Coil Spring

UHP SERIES ENGINE BLOCKS

- Premium high strength 32B cast iron
- Same specifications as GM LQ4 block plus:
 - Provision for front or rear cam sensor (GEN III or IV)
 - Provision for LS2 timing chaintensioner
- Uses all standard parts
- OE replacement

IN STOCK!



UHP
ULTRA HIGH PERFORMANCE

364364 - GM LS 6.0L 4.00" Bore (LQ4)



NEW PRODUCTS

UHP ENGINE BLOCK DOWEL PIN & PLUG KITS



IN STOCK!



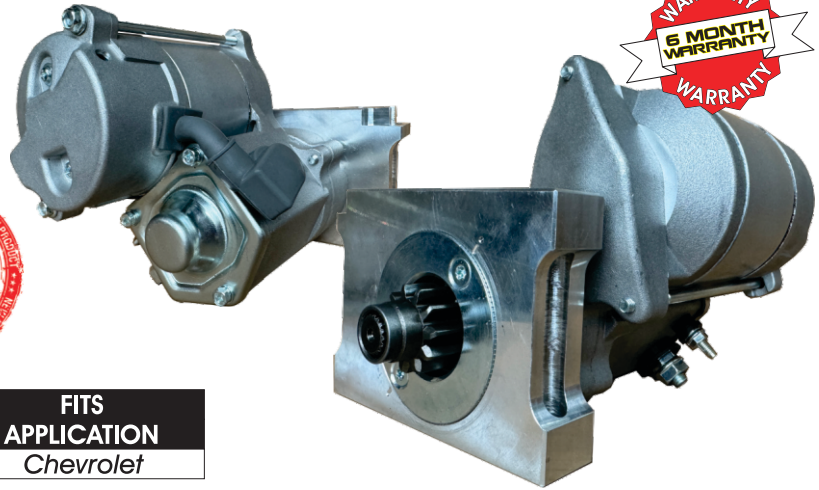
- Includes pipe plugs, & dowel pins required for our UHP blocks

Dowel & Plug Kits	FITS BLOCK	PKG. QTY.
Part Number		
364300	SBC 364350, 364373, 364400	Kit
364301	351W 364351, 364375	Kit

HIGH TORQUE 200 FT/LB MINI-STARTERS

- High quality - ALL NEW - NOT REBUILT!
- High strength billet DE housing
- Fully clockable 360°

ETA FEB 2025



Mini-Starters	NOTES	FITS APPLICATION
Part Number		
360920 ¹	Straight Mount 153T or 168T	Chevrolet

¹NOTE: THESE STARTERS ARE NOT FOR OFF-ROAD USE. NO WARRANTY FOR STARTERS THAT HAVE BEEN SUBMERGED IN WATER OR CAKED IN MUD.

SB FORD 289-351W & 302 5.0L BARE ALUMINUM CYLINDER HEADS

- Manufactured from A356-T6 heat treated aluminum
- Multi-angle intake and exhaust valve grind
- Sold bare ready for assembly
- All tech, specs & parts at www.performance-world.com

IN STOCK!

1.94"/1.60" Valves

MORE TECH ON WEBSITE



PROVEN.
DYNO. STREET. TRACK.

Specs:

- Intake Port: 2.00" x 1.18"
- Exhaust Port: 1.32" x 1.27"
- Spark Plug Config.: OE Angled
- Valve guide OD: .570"/.530"
- Valve Spring Pocket: 1.55"
- Rocker Style: Stud Mount

Heads Bare	FITS ENGINE	COMB CC	INTAKE CC	EXHAUST CC	VALVE SIZES	ROCKER MOUNT
Part Number						
60170-194 ^{1,2}	SBF 289-351W	61cc	175cc	66cc	1.94/1.60	Stud

¹ Can be used with factory 5.0L pistons. Check piston to valve clearance in all applications.

² This head is equipped for 1/2" head bolts/studs. For 7/16" (289-302), locators are required. Available from ARP and others.



Use Champion RC12YC (or Equivalent) Spark Plugs



LS SPECIFIC SILICONE HOSE COUPLERS

111315 - Straight radiator hose adapter (1.375" to 1.50")

118135 - 45° radiator hose adapter (1.375" to 1.50")

119135 - 90° radiator hose adapter (1.375" to 1.50")

ETA MAR 2025



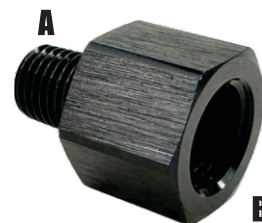
Reducers Part Number	STYLE	INLET I.D.	OUTLET I.D.	LENGTH	WALL THICKNESS	PSI CONT.
111315	Straight	1.375"	1.50"	3"	4-ply 5mm	87
118135	45° Elbow	1.375"	1.50"	5" Leg	4-ply 5mm	58
119135	90° Elbow	1.375"	1.50"	5" Leg	4-ply 5mm	58

STRAIGHT NPT TO AN ADAPTERS



IN STOCK

NPT EXPANDERS



NPT to AN Male Part Number	MATERIAL	NPT SIZE	AN SIZE
8160401	Aluminum	1/16" NPT	4AN

NPT Expander Part Number	"A" MALE NPT SIZE	"B" FEMALE NPTF SIZE
9120102	1/16" NPT	1/8" NPTF

BRAIDED STEEL FUEL LINES

- Lines to fit any past or present Holley® Carburetor
- Braided stainless steel hose
- Features one 1/8" NPTF port for fuel pressure take-off
- Fully assembled



IN STOCK!



Fuel Line Kits Part Number	FITS CARBURETORS	FITTING SIZE	CENTER SPACING	BRAIDED LINE
98311	8AN Holley® XP	8AN ORB to 8AN	9.75"	S/S

POLISHED STAINLESS COOLANT RECOVERY TANKS

- Polished stainless steel
- Integrated bracket
- 1/4" inlet/outlet
- Includes twist-on cap and mounting hardware



ETA FEB 2025!



Coolant Tanks Part Number	MATERIAL	DIAMETER	LENGTH
126213	Stainless Steel	2"	13"
126215	Stainless Steel	2"	15"
126308	Stainless Steel	3"	8"
126310	Stainless Steel	3"	10"



NEW PRODUCTS

10000LM HIGH POWER LED HEADLIGHTS

10,000LM H/L		
Part Number	LUMENS	FITS
416001 ¹	10,000LM	H1
416003 ¹	10,000LM	H3
416004	10,000LM	H4
416007	10,000LM	H7
416008	10,000LM	H8
416009	10,000LM	H9
416011	10,000LM	H11
416013	10,000LM	H13
416202 ¹	10,000LM	5202
416880 ¹	10,000LM	880/893
416904	10,000LM	9004
416905	10,000LM	9005/H10
416906	10,000LM	9006
416907	10,000LM	9007
416912	10,000LM	9012



**10,000 LUMENS
6,500K
360 DEGREE
ROTATION**



- SUPERBRIGHT LED'S ARE HERE!
- Great for use on most vehicles
- 360° rotation to suit most housings (most #'s)
- Compact design
- Includes load modules if required (optional)
- High quality aluminum construction

¹Fixed base. Non-rotatable.

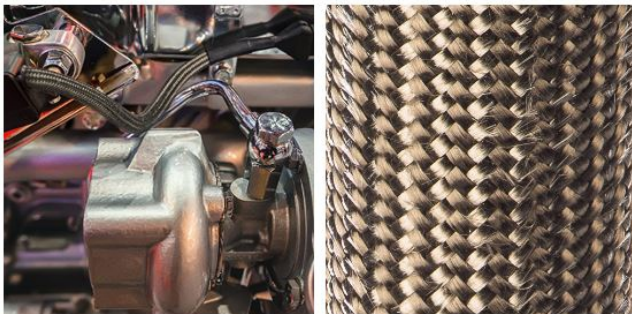


**H13
SHOWN**

Some vehicles may require additional installation components. Ask about your application when ordering!

PERFORMASLEEVE™ EXTREME TEMPERATURE SLEEVING

PerformaSleeve™ is made from continuous filament basalt fiber and engineered for protection from temperatures up to 1200°F. Flexible, durable, and easy to install, it will provide years of superior protection and unmatched aesthetics. Basalt fiber is a 100% inorganic mineral with exceptional high temperature and shock resistant qualities. Basalt fiber is similar to fiberglass and carbon fiber but has better mechanical properties than fiberglass and is lower in cost than carbon fiber. Protect ignition wires, hoses, tubing or electrical from extreme temperatures.



PerformaSleeve™	FITS		
Part Number	I.D.	LENGTH	COLOR
748625	1/4"	6'	Bronze
748638	3/8"	6'	Bronze
748650	1/2"	6'	Bronze
748675	3/4"	6'	Bronze



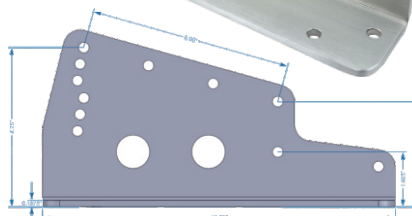


ALUMINUM RACING SEAT BRACKETS

PRODRAG2

- ProDrag2 Aluminum Seat Mount Brackets
- Fits PW ProDrag2 and other aluminum seats
- CNC bent 3/16" laser cut aluminum
- 5-1/4" tall x 10-1/2" long x 2" wide
- 5/16" holes for mounting
- Set/2

ETA JUN 2025

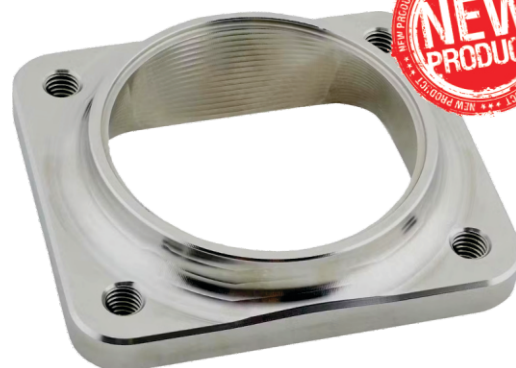


DragSeat2™ Mounts		SOLD
Part Number	MATERIAL	AS
283000	3/16" Aluminum	Set/2

BILLET TURBO MERGE MOUNT FLANGE

ETA 2025

- 5-axis CNC billet stainless steel
- Easily merge single pipes to your T-Series flange
- Save a TON of time, fabrication and aggravation!
- M10 x 1.50 threaded holes



Turbo Merge Flange	FITS	MATERIAL
Part Number		
427232	T3 to 2.50" pipe	T304 Stainless
427243	T4 to 3.00" pipe	T304 Stainless

TURBOCHARGER OIL RESTRICTOR FITTING

- For ball bearing turbochargers
- .060" restriction (no insert)
- Includes .030" & .045" inserts
- Inserts thread in on AN end
- Includes allen key



Oil Restrictor		NPT	AN
Part Number	MATERIAL	SIZE	SIZE
8160402R	Aluminum	1/8" NPT	4AN

IN STOCK

**CHEVROLET LS3 ALUMINUM BLOCK
350LPH IN-TANK FUEL PUMPS
MORE DISC BRAKE KITS AND PARTS
MORE COMING SOON!**

**POWER.
STARTS.
HERE.**

WWW.PERFORMANCE-WORLD.COM